

What's new?

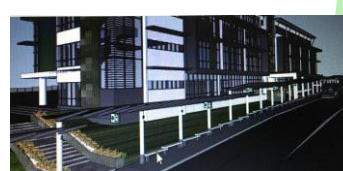
Proposed Senior High School Bridgeway to The SPARK



The creek adjacent to DLSZ Vermosa Campus



De La Salle Avenue as of
July 19, 2016



Proposed covered walkway
for drop-off and pick-up of
students in front of
Senior High School
as of
July 28, 2016



DLSZ Vermosa Bridge as of
July 28, 2016



Issue
02
July
2016

DLSZ VERMOSA CAMPUS

Monthly Journal: Construction Update

The SPARK

The following facilities will be available at The SPARK in Phase 1:

- Robotics Lab (1)
- Computer Lab (1)
- Electronics Lab
- Educational Technology
- Art (1)
- Graphics & Animation
- Sculpture (1)
- Debate Room (1)
- Student Governance (1)
- Music classroom
- Learning Resource Center (1)
- Theater (1)
- Dance Room (1)
- The Green Hub (1)
- Kitchen
- Assembly Area



Senior High School and The SPARK UNDER CONSTRUCTION

The project officially began last June 1, 2016 after securing all the necessary permits, mobilization of required equipment, personnel and installation of office and auxiliary services. After two months, the following were completed:

- SENIOR HIGH SCHOOL**
 - Fittings of elevator shaft up to 3rd floor
 - Installation of Steel girder structure
 - Canvassing of walls, floor tiles, elevators and air conditioning
- THE SPARK**
 - Revisions on fittings for laboratories, Interiors and kitchen
 - Modification of interior designs for 5th floor and basement
 - Excavation of basement up to 6 meters
 - Concreted footing tie beam
 - Casting of cistern tank



The following facilities will be available for Phase 1: Senior High School:

- Medical/ Dental Clinic
- Multi-purpose room
- Science Laboratories (4)
- Classrooms (28)
- Hotel & Restaurant Management
- Culinary Arts
- Faculty and Administrators area
- Counseling Rooms (2)
- Office Commons (6)

this issue

Senior High School and
The SPARK Update p. 1
The Sage Group Asia P.2

APERCU: Environment and
Traffic Study P.3

What's new?P.4

THE SAGE GROUP ASIA
PROJECTS WITH
DE LA SALLE
De La Salle Zobel
 Vermosa Campus
 Development Master Plan
 Imus Cavite

Pearl Classrooms,
 Renovation of Registrar &
 Finance Offices
 Alabang, Muntinlupa City

DLSU-STC University
 Academic Zone
 Georgy Ty Clean Building
 Richard Lee Hangar
 Building
 Innovation &
 Entrepreneurship Bldg.
 Food & Water Research
 Center
 Canlubang, Laguna

*Jaime Hilario Integrated
 School*
 Campus Development
 Master Plan
 Bagac, Bataan

La Salle College Antipolo
 College Bldg
 Antipolo City

De La Salle Lipa
 CBEAM Bldg.
 Lipa, Batangas City

La Salle GreenHills
 Br. Donato Performing Arts
 Theater
 Kinder, Grade School &
 Laboratories
 Mandaluyong City



THE SAGE GROUP
 Lifestyle Designs + Development

A Commitment to the Lasallian Community



De La Salle University
 Razon's Sports Center
 Interiors of St. La Salle
 Hall, Connon Hall,
 Wellness &
 Management Institute,
 Faculty Center,
 Yuchengco Commercial
 Strip

Pericos & Bloemen
 Food Halls
 Taft Avenue, Manila
*DLSU-Health Science
 Institute*
 Medical Arts Building
 Dasmarinas, Cavite City

De La Salle Philippines
 Pearl of the Great Price
 Chapel, Provincialate
 Renovation
 Lasallian Formation
 Center
 Mandaluyong City

The Sage Group Asia has been in the business since 2000 and merged committed design associates and strategic development partners to deliver educational, commercial, residential, hospitality and institutional designs. They create a holistic approach sustainable designs which are reflective of their clients' intrinsic values, lifestyle and business goals.

Architect Duke Sage, the founding President, is a committed Lasallian alumni commissioned and trusted by different La Salle Schools in the Philippines to develop and supervise design plans. To date, he and his team were able to design 25 buildings for different La Salle schools in various capacities.

The Lasallian charism must have inspired him in his works as their team also rendered several projects free of charge for non-profit institutions like Jaime Hilario Integrated School in Bagac, Bataan in partnership with Ambassador Carlos Valdes



AFSC, Archbishop Socrates Villegas and then JHIS President Br. Bernard Oca FSC.

Arch Duke, as he is fondly called, is also the man behind the Department of Education's Interactive Garden called "Hardin ng Kaginhawahan". This project was completed last May 3, 2016 as Br. Armin Luistro FSC's gift to DepEd employees and guests in collaboration with other donors such as City Green, College of St. Benilde and host school – DLSZ.

A soft spoken man with a big heart, Arch Duke considers DLSZ Vermosa campus as one his legacy to the Lasallian community. He has dedicated his weekly Wednesdays to personally supervise the project with the Vermosa Team to ensure compliance with the Campus Development Master Plan.

Hardin ng Kaginhawahan Project:



Environment and Traffic Study

Apercu Consultants Inc. completed the Initial Environment Examination (IEE) Report for Phase 1 - DLSZ Vermosa Campus and was certified by DENR last May 2016. This document was a requirement to secure the necessary government and legal papers prior to construction.

For Phase 2- 4 and for the preparation of the Site Development Plan, the same company was commissioned to prepare an Environmental Performance Report and Management Plan (EPRMP). The report was in compliance with DENR Reg. IV-A EIA Division as a documentary and technical requirements prescribed under DENR Administrative Order 2003-30.

To date, the following were accomplished:

a. Water quality assessment - sampling and analysis of receiving water (Imus River) of the project's waste water during construction and operation to identify the current and projected water use/ users.



c. Air Quality and Noise Assessment - 24-hour baseline sampling for Total Suspended Particulates (TSP) in at least four (4) stations and Noise sampling and analysis in four (4) sampling locations same with the TSP stations within the vicinity of the project area

d. Traffic Impact Assessment (TIA) – survey conducted in order to get the present traffic volume and

b. character along the major roads in the vicinity of the site.

Public Scoping will then be held to gather issues and concerns the stakeholders will have relative to the proposed project.

Apercu Consultants Inc. is led by Managing Director Ms. Lilibeth Yazon with her assigned team, Ms. Anna Conjares (Environment Specialist), Mr. Ronald Jose (Field Technician), Jethro Hipe (Air Quality Specialist), Mr. Randolph Carren (Traffic Impact Specialist and 3 field assistants.



VERMOSA SATELLITE OFFICE



By August 2016, the Vermosa Satellite Office will be ready for occupancy by the Construction Management Team. This facility will be the permanent office of representatives from DLSZ – *Charles Rapaport, Tere Castaneda, Andrew Chislett, BNPT – Engr. Cecile Apostol, Engr. Eddie Rivera, Engr. Ador Gabriel, Engr. Randy Balaoro* and the SAGE group – *Arch. Jeffrey Abelardo*. This will have the Conference area, Security Office, Mock-up classroom and the Warehouse.

Adjacent to the office will be the temporary 2- hectare plant nursery, parking space, site clinic, the office and barracks of our contractor, Teodoro Construction Corporation.

This pre-fabricated office was prepared by MyHouse, Dindo's Trading and Teodoro Construction Company with the supervision of Engr. Eddie Rivera.